

## INTRODUCTION:

### Intermediate Risk Prostate Cancer:

T1/T2 N0M0

1) Gleason <8

2) PSA <20

and at least 1: T2b; Gleason score = 7; PSA >10

Significant heterogeneity in PSA-based biochemical outcome as 5-year PSA failure rates:

- 11-54% (radical prostatectomy)
- 9-44% (external beam radiotherapy)

*D'Amico JAMA 1998;280:969-974*

1



## HYPOTHESIS:

**“ High-resolution array CGH can identify novel copy number alterations in intermediate risk fresh-frozen prostate biopsies ”**

### Study Cohort:

AGE: 56 to 77 yrs old

T CATEGORY: T1 tumors (4 pts) and T2 tumors (20 pts)

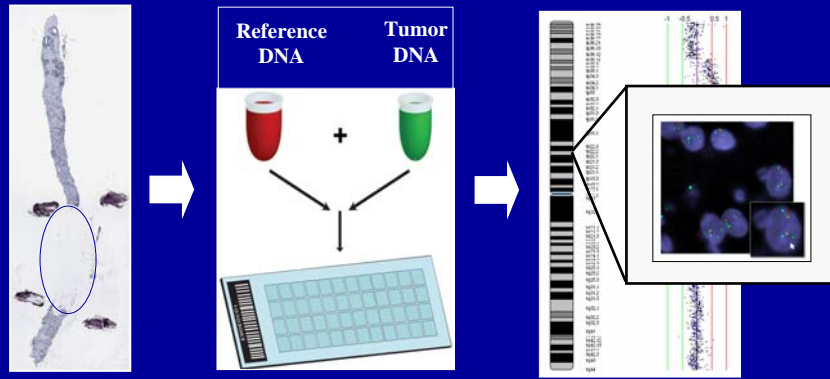
GLEASON SCORE: 3+3 (8 pts); 3+4 (11 pts); 4+3 (5 pts)

PSA RANGE: 4.4 to 17.82 ug/ml

2



## METHODS:

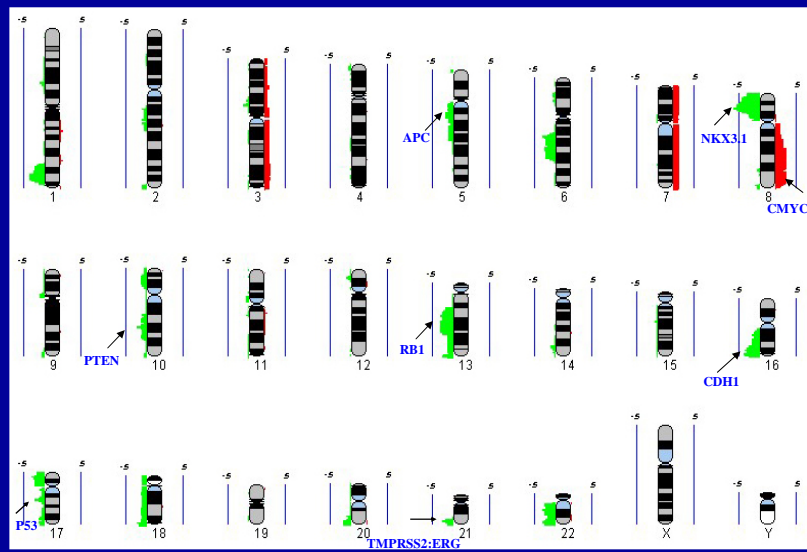


Ishkanian et al. *Nature Genetics* 2004

3



## RESULTS



4



## CONCLUSIONS:

---

- 1) **Fresh frozen prostate biopsies are suitable for global profiling using high resolution arrayCGH and FISH confirmation**
- 2) **Intermediate risk prostate cancer contains a subset of DNA alterations found in high-risk disease**
- 3) **Six novel high frequency microdeletions are currently under investigation**

